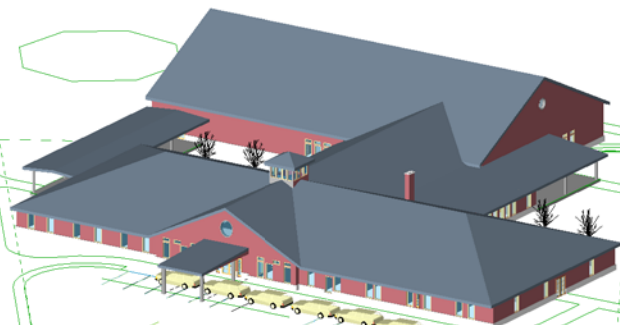


H:\PROJECTS\CORNERSTONE\SD\072507HIPROOF[2].rvt

9/19/2008 8:22:44 AM



CORNERSTONE COMMUNITY SCHOOL

MASTER PLAN - OPTION C

4510 STOW ROAD, STOW OHIO

DESIGN WITH A VISION Rick Hawksley AIA Architect PO BOX 664 Kent Ohio 44240 Rick@designwithavision.com 330.673.5055